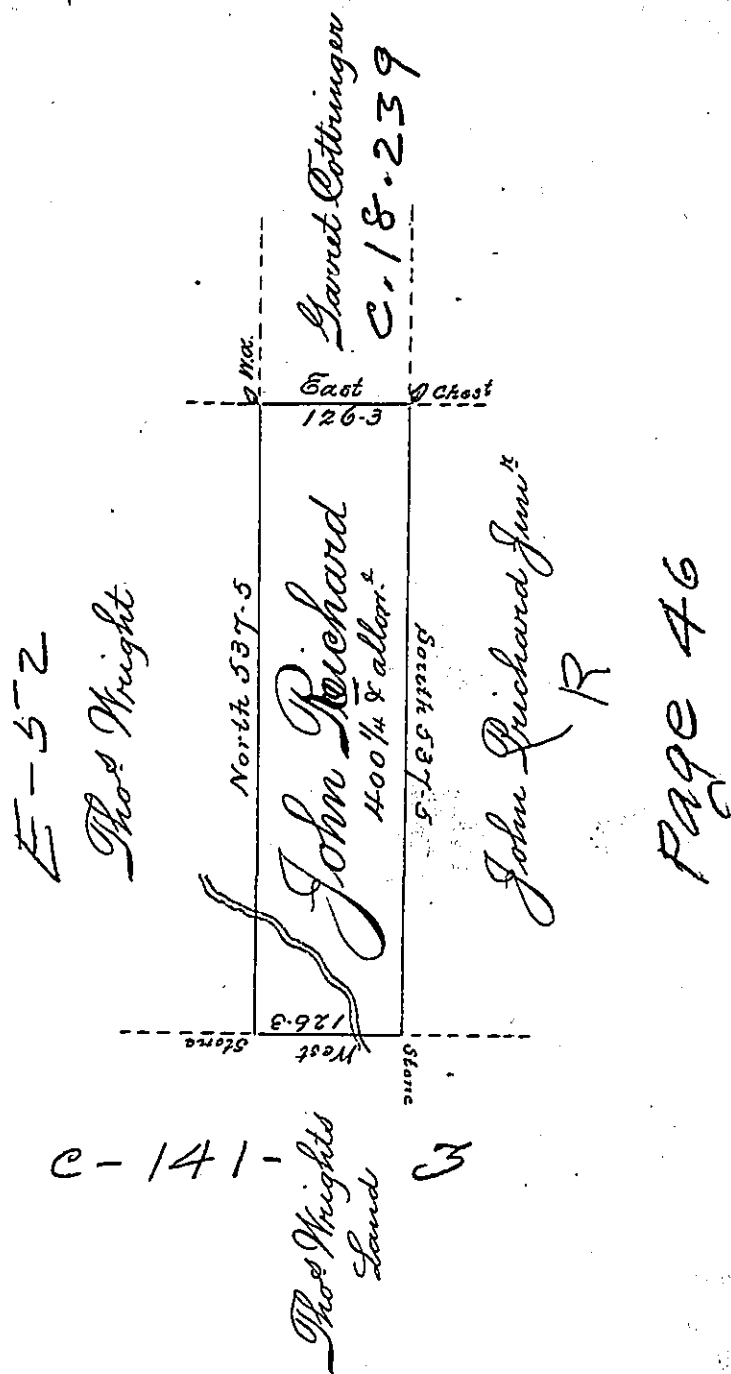


DEMISON -
LUZERNE



PAGE 46

A Draft of a tract of land called _____ Situate
 on the water of Lehi joining Land surveyed for Thomas
 Wright & others in the county of Luzerne containing four
 Hundred acres $\frac{1}{4}$ & allowance of Six p Cent for ^{roads} &c.
 Surveyed for John Prichard the 6th Day of June 1792
 in pursuance of a warrant dated the 4th Day of April
 1792 by

Wm Gray D.S.

To Daniel Brodhead Esq^r }
 Sur^r-Gen^l }

IN TESTIMONY that the above is a copy of the original remaining on file in
 the Department of Internal Affairs of Pennsylvania, made
 conformably to an Act of Assembly approved the 16th day of
 February, 1833, I have hereunto set my Hand and caused
 the Seal of said Department to be affixed at Harrisburg,
 this Sixth day of September 1898.

James W. Latta
 Secretary of Internal Affairs.